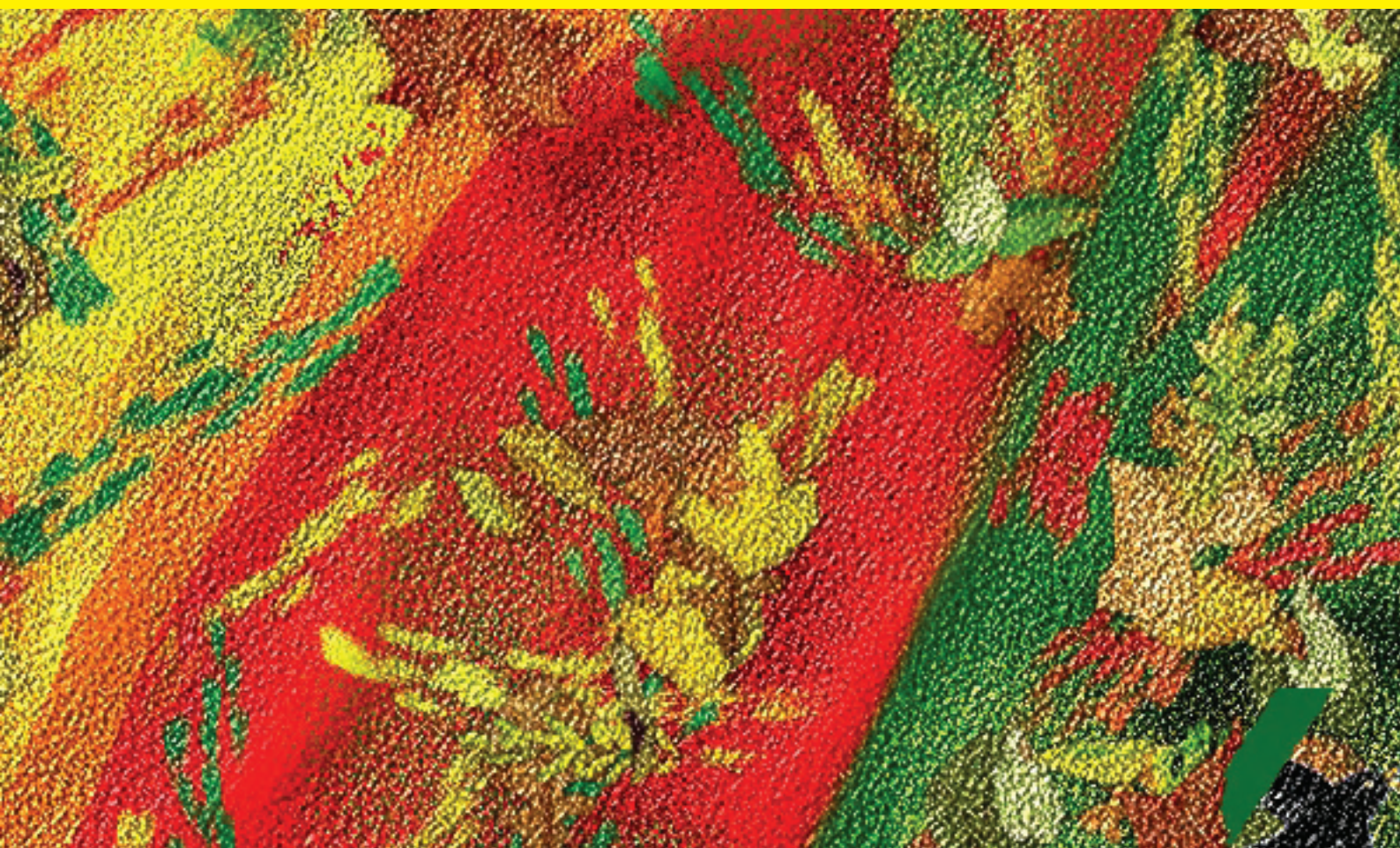




SBCCI2008

**21st SYMPOSIUM ON INTEGRATED
CIRCUITS AND SYSTEMS DESIGN**

CHIP IN THE PAMPA



**Gramado, BRAZIL
September 1 to 4, 2008**

www.sbc.org.br/sbcci



SBCCI2008

21st Symposium on Integrated Circuits and Systems Design

September 1 to 4, 2008

CHIP IN THE PAMPA

Gramado, Brazil

Call for Papers

General Chair:

Marcelo Lubaszewski,
UFRGS, Brazil
luba@ece.ufrgs.br

Program Chairs:

Michel Renovell,
LIRMM, France
renovell@lirmm.fr

Rajesh Gupta,

UCSD, USA
rgupta@ucsd.edu

Local Arrangements Chair:

Fernanda Kastensmidt
UFRGS, Brazil

Tutorials Chair:

Luis Miguel Silveira
INESC, Portugal

Panels Chair:

Ricardo Jacobi
UNB, Brazil

Finance Chair:

Renato Ribas
UFRGS, Brazil

Publicity Chairs:

Ricardo Reis
UFRGS, Brazil

Jürgen Becker

Univ. Karlsruhe (TH), DE

Publication Chair:

Érika Cota
UFRGS, Brazil

Industry Liaison:

Cesar Zeferino
Univali, Brazil

US Liaison:

Alex Orailoglu
UC San Diego, USA

Europe Liaison:

Reiner Hartenstein
Univ. Kaiserslautern, DE

Asia Liaison:

Jaesup Lee
Samsung Electronics Co. Ltd.

Latin-America Liaison:

Fernando Silveira
IIE-UROU, UY

IEEE Design&Test Liaison:

Yervant Zorian
Virage Logic, USA

For Program Committee Members,
please see the conference webpage

SBCCI is an international forum dedicated to integrated circuits and systems design, test and CAD, held annually in Brazil. The 21st SBCCI will take place at **Gramado**, Brazil (near Porto Alegre). The goal of the symposium is to bring together researchers in the areas of computer-aided design, design and test of integrated circuits and systems. The scope of the symposium includes technical sessions, tutorials and panels, as well as exhibition and working group meetings. The best papers presented at the symposium will be invited to resubmit an extended version to be considered

for publication at the **IEEE Design&Test** of Computers and at the **JICS** - Journal of Integrated Circuits and Systems.

Paper Submission:

SBCCI strongly encourages international submissions. Prospective authors from around the world are invited to submit manuscripts in English for consideration by the Program Committee. Manuscripts must contain a maximum of 10 pages, using 11-point font or larger and 1.5 or double spacing and prepared for blind review. Submissions of manuscripts previously published by other conferences or journals will not be considered by the program committee. SBCCI submissions must be made electronically (in PDF format) via the conference website. For proposals on special sessions, tutorials, panels and tool demos, please email a short description to the program chairs directly in advance of the submission deadline. For additional inquiries on submissions, please contact the program chairs. Final versions will be published as two-column, 6-page papers, following the ACM Press guidelines. Authors should include the complete address, phone/fax numbers and email address, and designate a contact person and a presenter.

Topics of interest include, but are not limited to:

- System level modeling and synthesis
- Hardware-software co-design and co-verification
- High-level and logic synthesis
- Physical design
- Verification, simulation, emulation and prototyping techniques
- Testability issues, design for test techniques
- Reconfigurable architectures and novel applications of FPGAs
- Design and modeling languages and applications
- Analog, Digital and mixed signal designs
- Embedded systems design and industrial applications
- Systems-on-chip, IP reuse and platform-based designs
- Low power tools and design techniques
- Micro-electromechanical systems
- Nanoelectronic circuits and nanoarchitectures

Important Dates:

Submission Deadline:

March 24th, 2008

Notification of Acceptance:

May 14th, 2008

Camera-Ready Deadline:

June 6th, 2008

Location:

Gramado is a mountain resort in the state of Rio Grande do Sul. It is one of the top tourist destinations in Brazil, located 120km away from Porto Alegre. Conference shuttles will run from Porto Alegre airport, at some specific hours before and after the conference. This short shuttle ride can be considered the first social event of the conference. Gramado is characterized by the influence of the German immigration in the region, and by its excellent and diverse cuisine. With its bavarian architecture style, Gramado is surrounded by beautiful mountains and it provides a great environment for holding conferences and meetings. The waterfall of "Caracol" is a must to see location, just few km from Gramado. The "Green Canyons" of Itaimbezinho and Fortaleza are also wonderful locations for a one day tour before or after the conference.

Sponsored by:

SBC - BRAZILIAN COMPUTER SOCIETY
SBMicro - BRAZILIAN MICROELECTRONICS SOCIETY
IEEE CIRCUITS & SYSTEMS SOCIETY
ACM SIGDA

Co-Sponsored by:

IFIP WG10.5 - International Federation for Information Processing

Organized by:

UFRGS - Universidade Federal do Rio Grande do Sul

Supported by:

CNPq, CAPES, FINEP, FAPERGS

Published by:

ACM PRESS

SBCCI2008 will be co-located with
SBMicro2008 - The 23rd Symposium on Microelectronics Technology and Devices.



www.sbc.org.br/sbcc

